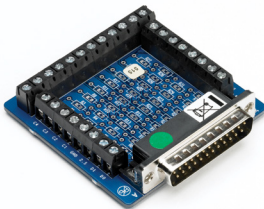


PicoLog[®] 1000 Series

Multi-channel data acquisition



- Up to 16 unipolar analog input channels
- Up to 12-bit resolution with 0.5% accuracy
- Up to 4 software-configurable digital output lines
- Up to 1 MS/s sample rate
- USB connected and powered
- Complete with ready-to-go data logging software
- Includes API and examples for C, Excel (VBA), LabVIEW



All you need

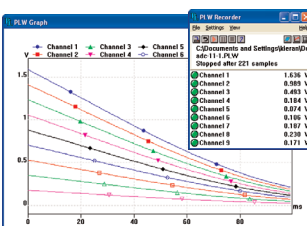
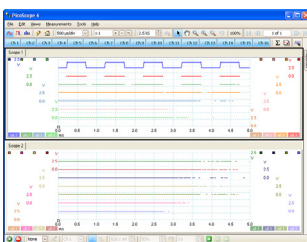
Designed to meet the needs of a wide range of general-purpose voltage, sensor and transducer logging applications, the PicoLog 1216 and 1012 feature independent software-configurable channels, ranges, scaling and control outputs. Supplied complete with a terminal board that allows easy range extension and ease of terminating wires.

Ready-to-go

The PicoLog 1000 Series multi-channel voltage data loggers include everything needed for immediate use and are complemented by a full suite of software including the PicoLog data logging package, the PicoScope oscilloscope package and a software development kit (SDK) for writing user programs.

Flexible sampling modes

Both loggers feature three sampling modes to meet most data logging needs: streaming, real-time continuous and block mode. Streaming allows channel voltage readings to be logged continuously at 1 kS/s on any number of channels, while real-time continuous provides averaged, time-accurate readings with automatic measurements available in PicoLog. Block mode captures at the full 1 MS/s sample rate of the logger into available memory.



| | PicoLog 1216 | PicoLog 1012 |
|-------------------------------------|---|-------------------|
| INPUTS | | |
| Analog inputs | 16 channels | 12 channels |
| Resolution (bits) | 12 bits | 10 bits |
| Sampling rate, streaming | 1 kS/s per channel in PicoLog, 100 kS/s using API | |
| Sampling rate, block mode | 1 MS/s using PicoScope and API | |
| Sampling rate, real-time continuous | 1 kS/s or greater | |
| Capture size | 8128 sample internal buffer shared by all channels 1 million sample limit using SDK (dependent on sampling rate) | |
| Input type | Single-ended, unipolar | |
| Voltage range | 0 - 2.5 V | |
| Accuracy | 0.5% @ 12 bits | 1.0% @ 10 bits |
| Overload protection | ±30 V | |
| AC/DC coupling | DC coupling | |
| Input impedance | 1MΩ fixed – buffered inputs | |
| OUTPUTS | | |
| Digital outputs | 4 digital outputs | 2 digital outputs |
| Output power for sensors | 2.5 V @ 10 mA. Current-limited | |
| Other outputs | PWM output (PicoScope 6 and API) | None |
| GENERAL | | |
| PC connectivity | USB 2.0 full speed | |
| Power requirements | Powered from USB port, < 200 mA operating, < 100 mA on startup | |
| Input/output connector | 25-way D Type, female (pin-compatible with USB ADC-11) | |
| Dimensions | 45 mm x 100 mm x 140 mm (1.77" x 3.94" x 5.51") | |
| Weight | < 200 g (7.05 oz) | |
| Temperature range | Operating: 0 °C to 70 °C (20 °C to 50 °C for stated accuracy) | |
| Humidity range | Operating: 5 % to 85 % RH non-condensing | |
| Compliance | CE (EMC) Class A emissions & immunity. FCC emissions | |
| PC requirements | Windows 7, Windows 8 or Windows 10, 32 or 64 bit | |
| - PicoLog FEATURES | | |
| Multiple views | View data as a graph, spreadsheet or text | |
| Parameter scaling | Convert raw data into standard engineering units | |
| Math functions | Use mathematical equations to calculate additional parameters | |
| Alarm limits | Program an alert if a parameter goes out of a specified range | |
| - PicoScope 6 FEATURES | | |
| Capture modes | Oscilloscope, spectrum and persistence modes | |
| Channel maths | Calculate the sum, difference, product, inverse or create your own custom function using standard arithmetic, exponential and trigonometric functions | |
| Automated measurements | 15 scope measurements and 11 spectrum measurements | |
| DEVELOPMENT KIT | | |
| SDK | Supports all C-compatible languages. Example code provided in C, Visual Basic for Applications (Microsoft Excel) and National Instruments LabVIEW | |
| Compatibility mode | Drop-in replacement of USB ADC-11 | |

Ordering information

| ORDER CODE | DESCRIPTION | USD* | EUR* | GBP* |
|------------|----------------------------------|------|------|------|
| PP547 | PicoLog 1216 with terminal board | 259 | 219 | 185 |
| PP546 | PicoLog 1012 with terminal board | 179 | 149 | 129 |
| PP545 | Terminal board only | 25 | 21 | 18 |

* Prices are correct at the time of publication. Sales taxes not included.
Please contact Pico Technology for the latest prices before ordering.

UK headquarters

Pico Technology
James House
Colmworth Business Park
St. Neots
Cambridgeshire
PE19 8YP

United Kingdom

☎ +44 (0) 1480 396 395
☎ +44 (0) 1480 396 296
✉ sales@picotech.com

US headquarters

Pico Technology
320 N Glenwood Blvd
Tyler
Texas 75702
United States

☎ +1 800 591 2796
☎ +1 620 272 0981
✉ sales@picotech.com



Elso Philips Service
Jilemnického 2; 911 01 Trenčín
tel: +421 32 6582410
fax: +421 32 6582592
email: elso@elso.sk
web: www.elso.sk

Errors and omissions excepted. Pico Technology and PicoScope are internationally registered trade marks of Pico Technology Ltd.

MM020-7. Copyright © 2009–2017 Pico Technology Ltd. All rights reserved.

www.picotech.com

pico
Technology